



# INSPECTION CENTRE

## PROCESS WORK FLOW



CREATING PEACE OF MIND



## CHILLED FISH INSPECTION AND CERTIFICATION PROCESS

## EXPORTER

## INSPECTION CENTRE

Start

Send the  
certification  
request to  
Inspection CentreReview Request  
and Final Loading  
Details

Documents not in order

X

All in order

Randomly sample  
for inspectionConduct inspection  
and complete  
reportProcess in the  
ledgerType and print  
Health CertificateVerify, sign and  
issue health  
certificate to client

Receive Certificate

Export

END

## FROZEN FISH INSPECTION AND CERTIFICATION PROCESS

## EXPORTER

## INSPECTION CENTRE

Start

Send the inspection  
request to  
Inspection CentreReview inspection  
request

Documents not in order

All in order

Send sampling  
report and  
randomly sample  
for inspectionInvestigate and  
rectify non-  
compliance

Product not complying

Conduct inspection  
and send feedback  
report  
Process  
inspection request in  
the ledger

Product complying

Send final loading  
details

100% correct final loading details

Process final  
loading details in  
the ledgerType and print  
Health Certificate

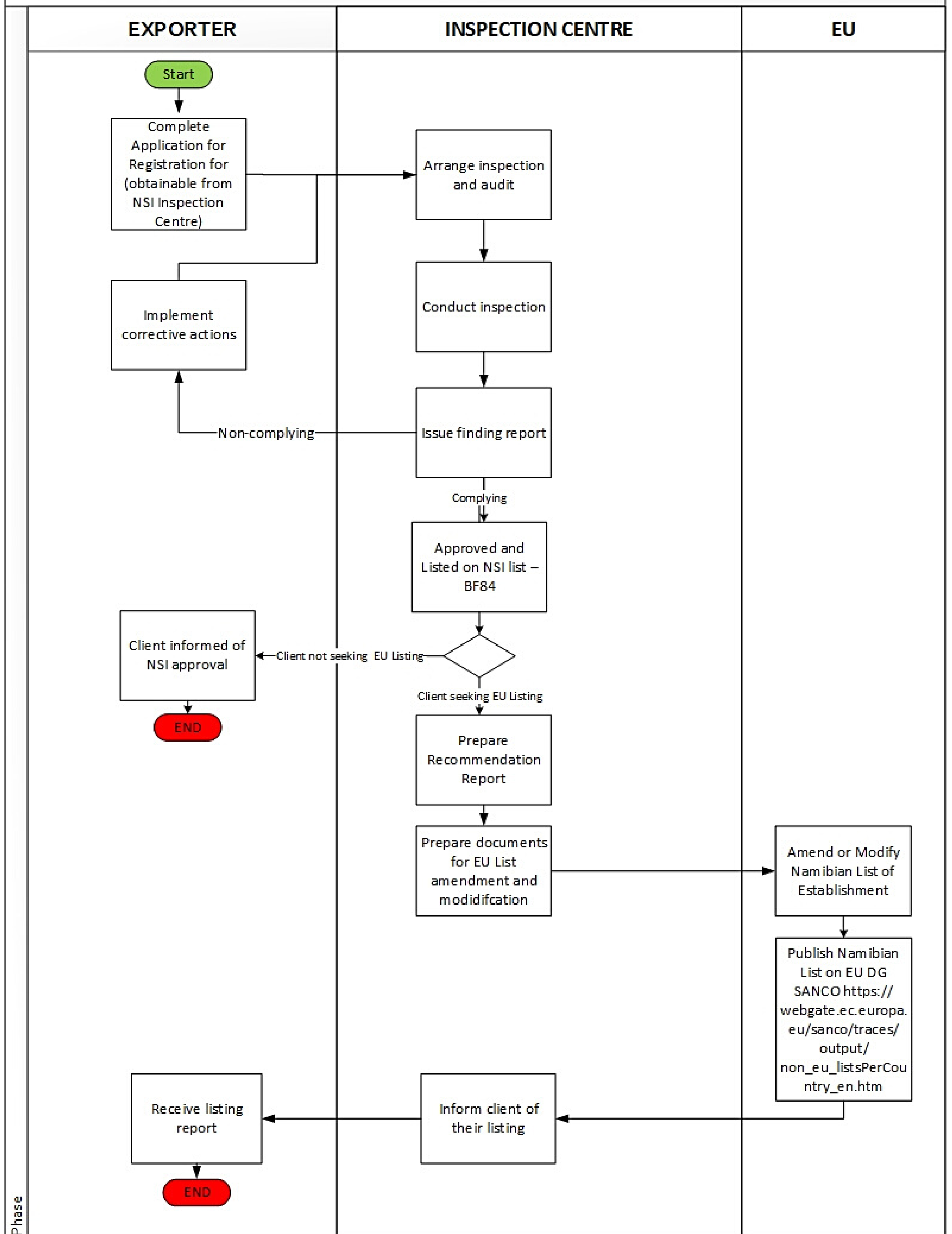
Receive Certificate

Verify, sign and  
issue health  
certificate to client

Export

END

## PROCESS OF REGISTERING ESTABLISHMENTS





General Manager: Testing and Inspection - Ms. Paloma Ellitson,  
EllitsonP@nsi.com.na

Manager: Inspection Centre - Mr. Abed Shiyukifeni,  
ShiyukifeniA@nsi.com.na

Quality Assurance Officer - Ms. Taleninawa-Bonnettie Hatutale,  
HatutaleT@nsi.com.na

Walvis Bay Inspection Centre  
Tel: +264 64 216 650  
Fax: +264 64 203 868

220 1st Street East  
Walvis Bay  
P.O. Box 123  
Walvis Bay

Lüderitz Inspection Centre  
Tel: +264 63 207 650  
Fax: +264 63 203 697

Erf 796, Industrial Area  
Lüderitz  
P.O. Box 947  
Lüderitz

[www.nsi.com.na](http://www.nsi.com.na)  
[query@nsi.com.na](mailto:query@nsi.com.na)



Follow us on social media @NSI\_Namibia